



**ROCKTECH**

ROCKTECH ESIZAYO AFRICA (PTY) LTD

*Our products cover  
the full range of wearparts.*

A close-up photograph of several yellow, heavy-duty wearparts, likely excavator buckets or blades, arranged in a row. Each part has a circular stamp with the 'REW' logo on its side. The background is dark and out of focus.

*We've been in the business of supplying the earthmoving industry with top quality wearparts for a long time. Little wonder, then, that our customers consider us groundbreakers.*



**ROCKTECH**

ROCKTECH ESIZAYO AFRICA (PTY) LTD

Since 1977, Rocktech Earthmoving Wearparts has been a leading manufacturer and supplier of attachments and ground engaging tools for the South African market. Our extensive product range integrates the latest in design and wear-resistant materials technology such as boron steel to ensure longer operating lifespans and lower operating costs for your equipment.

Our countrywide distribution network with a presence in all major centres ensures that no matter where you are, we are there with the right parts to keep you moving the earth.

# J-SERIES

## CAT TYPE SIDE PIN TOOTH SYSTEM



**HEAVY DUTY ABRASION**  
HIGH ABRASION- LOW PENETRATION



**ROCK PENETRATION- SPR**  
HIGH PENETRATION- COMPACTED GROUND, ROCK



**ROCK PENETRATION ABRASION –CE**  
ABRASIVE ROCK AND ROCK PILES



**HEAVY DUTY PENETRATION**  
HOT SLAG, ABRASIVE CONDITIONS



**PENETRATION PLUS**  
HIGH IMPACT, HIGH PENETRATION



**PENETRATION ABRASION**  
HIGH ABRASION ROCK APPLICATION



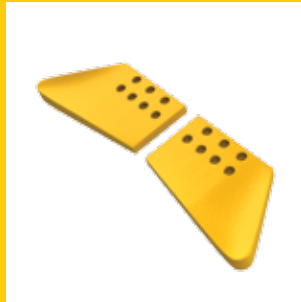
**HEAVY DUTY ADAPTORS**  
TOUGH ADAPTORS, CRACK TESTED,  
GUARANTEED AGAINST BREAKAGE

*Rocktech supplies all the common shape of tips and we have also designed some of our own to assist in optimal penetration and performance*

All Rocktech tips are designed to fit perfectly onto Rocktech and OEM adaptors and will meet or exceed OEM performance standards. All tips carry our normal guarantee against breakage

# BULLDOZERS

*Rocktech manufactures cutting edges and end bits for all makes of Dozers. From Cat D4 to Cat D11, Komatsu D65 to D475. Liebherr, Fiat, Bell,*



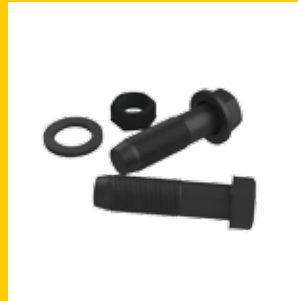
**END BITS- HOT CUPPED**  
GENERAL PURPOSE BORON STEEL  
CAT, KOMATSU, LIEBHERR- ALL SIZES



**END BITS- HEAVY DUTY CAST**  
EXTREME WEAR- CONDITIONS AND MINING  
APPLICATIONS



**CUTTING EDGES**  
MANUFACTURED FROM BORON STEEL FOR MAXIMUM  
LIFE. ALL SIZES AND THICKNESS CAN BE MANUFACTURED

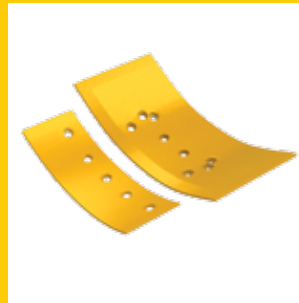


**HARDWARE**  
GRADE 12.2  
HIGH TENSILE BOLTS AND NUTS THAT WON'T BREAK OR STRIP

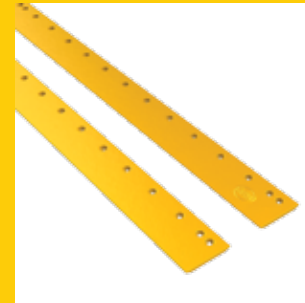
# GRADER BLADES



**GENERAL PURPOSE CURVED**  
CONSTRUCTION, FINAL LEVELS  
ALL LENGTHS 16MM,19MM,25MM



**OVERLAYS**  
CAT, GALLION, KOMATSU, VOLVO, MITSUBISHI



**FLAT BLADES**  
HAULAGE ROADS AND MINING  
APPLICATIONS, 25MM, 32MM, 50MM

## HALF ARROWS



**HALF ARROW PROFILES**

HARDENED TO 500BN FOR EXTREME WEAR 19MM, 29MM, 40MM, 3.6M LENGTHS, 1.2M LENGTHS

Grader Blades are available in all sizes and thickness and in both Carbon Steel or THRU hardened Boron steel.  
Our blades are approved by the Department of Roads and locally manufactured for tough SA conditions

# RIPPER TIPS AND SHANKS

*Rocktech ripper and scarrifier shanks and tips are extremely tough and designed for optimal performance. All sizes and machines*



**SCARRIFIER SHANKS AND TIPS**



**RIPPER SHANKS AND TIPS**

*All Rocktech Ripper tips are designed to meet or exceed OEM standards.*

## OTHER TIP STYLES

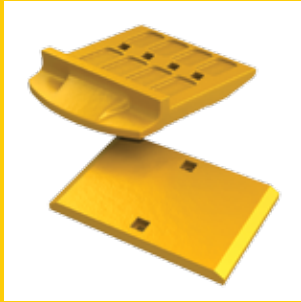


**BOFORS STYLE**  
ALL SIZES AVAILABLE



**SUPER V TYPE**  
ALL SIZES AVAILABLE

# BUCKET PROTECTION



## BUCKET SEGMENTS

ALL SIZES AVAILABLE, CUSTOM MADE TO SUIT YOUR LOADER



## WING SHROUDS

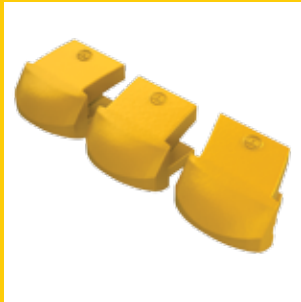
SIDE BUCKET PROTECTION - ALL SIZES AVAILABLE



## HEEL SHROUDS

BUCKET PROTECTION. ALL BUCKET SIZES

*Rocktech believes in protecting your bucket. We have a full range of products designed to protect your buckets, to ensure optimal performance and minimal downtime.*



## LIP SHROUDS

SUITABLE WELD-ON AND MECHANICAL LIP SHROUDS AVAILABLE FOR ALL LIP SIZES



## TUNGSTEN BUTTONS

HIGH QUALITY TUNGSTEN CARBIDE  
75MM, 90MM, 115MM SIZES



## CHOCKY BARS

HIGH QUALITY TUNGSTEN CARBIDE



Wade Lemmer

Tel: 0966996943 | Email: [wade@lemmerhydraulics.com](mailto:wade@lemmerhydraulics.com)

Deon Lemmer:

Tel: 0966996936 | Email: [ox@lemmerhydraulics.com](mailto:ox@lemmerhydraulics.com)

Paul Fester

Tel: 0966996922 | Email: [paul@themazhub.com](mailto:paul@themazhub.com)

Tel: +27 11 793 6838 | Fax: +27 11 793 6626

Web: [www.rocktech.co.za](http://www.rocktech.co.za) | Email: [russell@rocktech.co.za](mailto:russell@rocktech.co.za)



**ROCKTECH**  
ROCKTECH ESIZAYO AFRICA (PTY) LTD